



ENERGY SAVING
LED LIGHTS

LED PRODUCT

EXPLORER



NAMASTE
LED LIGHTS



SRM Group was founded in 1952. The group plays a critical role in the development of talent pool in northern region of India through it's endeavours in ICT Services, IT & Software, LED Luminaire, Education, Health Care, e-governance, CAD, CAM, CAE, GIS, Mercedes Benz Automobiles and Agriculture.

This family owned business has expanded many folds by young generation of graduates from Stanford, Berkeley, MIT and IITs. We are entrepreneurs with a mission to bring quality jobs to people in this part of India, with varied business interests we are always striving to be the best in our endeavours and to run every company as a professional unit with touch of empathy and experience coming from the previous generation.

At any given point of time the SRM Group family consists of more than 2000 full time employees, with presence in more than 9 countries.

The Group enjoys the unparalleled trust, faith and confidence of its patrons, and is one of the largest employers in this part of the country with a young, highly-trained and motivated workforce, with an average age of less than 35 years.



SRM TECHSOL
PVT. LTD.



SRM STAR PVT. LTD.



NAMASTE LED



DAZZ LED



SHRI RAMSWAROOP
MEMORIAL PUBLIC
SCHOOL



SRM ENGINEERING
SOLUTIONS
PVT. LTD.



SHRI RAMSWAROOP
MEMORIAL COLLEGE
OF MANAGEMENT



LUCKNOW EYE
HOSPITAL



1
Operating
Temperature
Range (-200 C to +
600 C)

2
Better luminous
Flux 4 and 5 star
rating
(as per BEE
standards)

3
For 4 Star,
Luminous Flux
will be in b/w
(105-120) lm/W

4
For 5 Star,
Luminous Flux
will be >120

5
Luminous
Flux > 105
lm/W

6
Higher surge
protection
i.e. 3KV in
Bulbs/Tube
lights.

7
In-house R&D
Laboratory with
all advanced
testing
equipment.

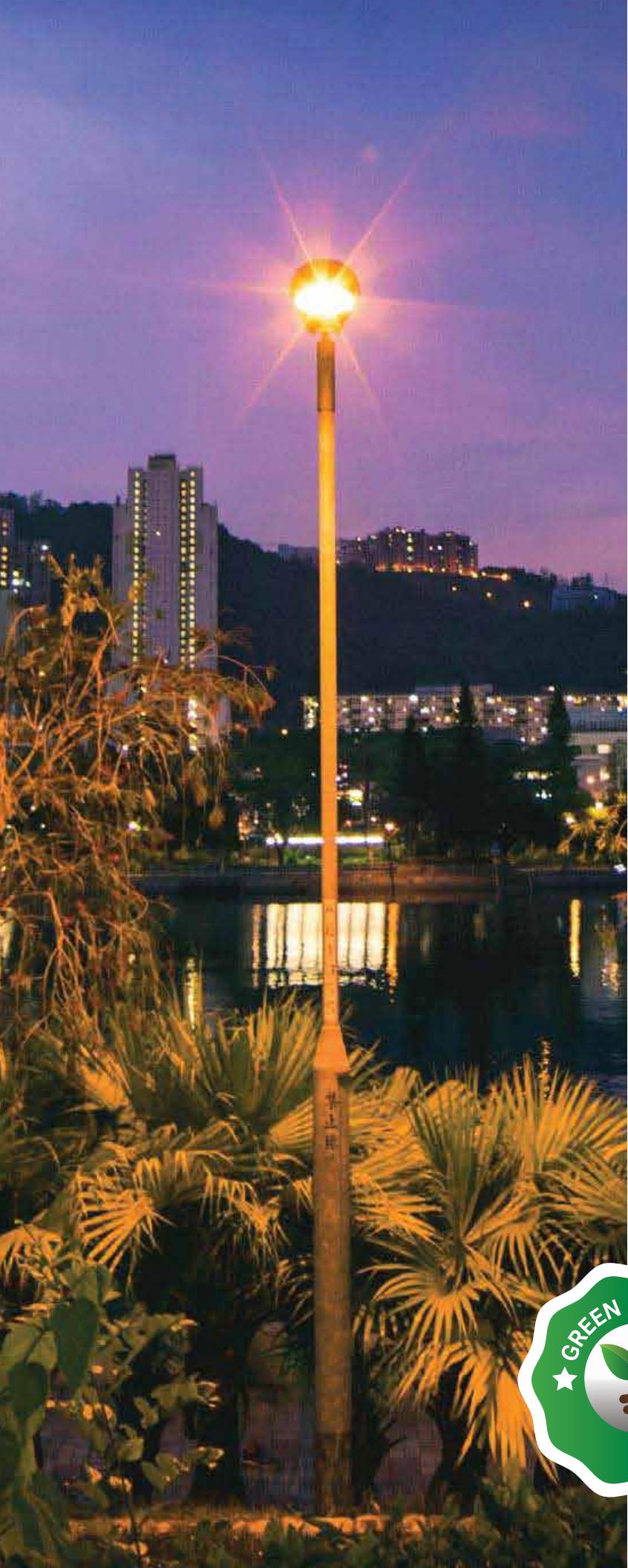
8
Better
Thermal
Management
of LED.

Namaste LED Lights comes with smart innovation(s) in the future of lighting. We provide simple and lasting lighting solutions to the user. With focus on quality and durability Namaste LED Lights has a clear edge in today's market. Every LED Light made by NAMASTE LED is crafted to meet global standards. Namaste LED Lights are developed specially to optimize their output, outshining many other light players in the market. Our Lights are superior in quality, priced fairly, and offer 2 years warranty.

With our state of the art in-house photometry and R&D setup we will constantly work towards creating better products.

Namaste LED Lights fully integrate into the systematic structure of the overall lighting product range. This allows lighting designers the freedom to use LED lighting tools and seamlessly combine them with conventional products. Almost all products are UL certified bearing LM 79 test report.





INDEX

Indoor Lights	_____	4-18
Commercial Lights	_____	19-27
Outdoor Lights	_____	28-38
Solar Lights	_____	39-43
Specialized Lights	_____	44-47



INDOOR LIGHTING





LED BULBS 270°



Short Code	Power
IN002	7W
IN003	9W
IN004	12W

Lamp holder
B22/E27

Luminous flux
≥ 105/W

CCT
CW/WW/NW

CRI
≥ 80Ra

Voltage
AC 90-320V, 50-60HZ

Beam angle
270°

Life span
30000 hrs.

Power Factor
>0.95

Surge Protection
up to 3KV

Operating temperature
-20° C to 55° C

Applied Places:
Bedroom, Living room, Lobby, Rooms, Bathrooms,
Shops, Restaurants, Hotels, Institutions, Hospitals etc.



LED BULB 180°



Short Code	Power
IN005	15W
IN006	18W

Lamp holder
B22/E27

Luminous flux
≥ 105/W

CCT
CW/WW/NW

CRI
≥ 80Ra

Voltage
AC 90-320V, 50-60HZ

Beam angle
180°

Life span
30000 hrs.

Power Factor
> 0,95

Surge Protection
up to 2,5KV

Operating temperature
-20° C to 55° C

Applied Places:

Bedroom, Living room, Lobby, Rooms, Shops,
Restaurants, Bathrooms, Hotels, Institutions,
Hospitals etc.



LED HAMMER BULB



Short Code	Power
IN007	24W
IN008	30W
IN009	40W
IN0010	50W

Lamp holder
B22/E27

Luminous flux
≥ 100/W

CCT
CW/WW/NW

CRI
≥ 80Ra

Voltage
AC 90-320V, 50-60HZ

Power Factor
> 90

Surge Protection
up to 3KV

Operating temperature
-20° C to 55° C

Applied Places:
Lobby, Rooms, Shops, Restaurants, Hotels,
Institutions, Hospitals etc.



LED FILAMENT BULBS



Short Code	Power
SP003	2W
SP004	4W
SP005	6W

Lamp holder
B22/E27/E14

Luminous flux
≥100-120/W

CCT
CW/WW/NW

CRI
≥80Ra

Voltage
AC 120-265V, 50-60HZ

Beam angle
360°

Life span
30000 hrs.

Operating temperature
-20° C to 55° C

Applied Places:
Bedroom, Living room, Lobby, Rooms, Shops,
Restaurants, Walkways, Conference Room etc.



LED BULBS 220°

(MUSHROOM)



Short Code	Power
NEL811020	9W
NEL811021	12W

Lamp holder

B22/E27

Luminous flux

≥110/W

CCT

CW/WW/NW

CRI

≥80Ra

Voltage

AC 100-320V, 50-60HZ

Beam angle

150°

Life span

30000 hrs.

Power Factor

>0.95

Surge Protection

up to 2.5KV

Operating temperature

-20° C to 55° C

Applied Places:

Bedroom, Living room, Lobby, Bathrooms, Shops, Restaurants, Hotels, Institutions, Hospitals etc.



LED BULBS 220°

(PREMIUM)



Short Code	Power
NEL811020	9W
NEL811021	12W

Lamp holder

B22/E27

Luminous flux

≥ 115/W

CCT

CW/WW/NW

CRI

≥ 80Ra

Voltage

AC 100-320V, 50-60HZ

Beam angle

220°

Life span

30000 hrs.

Power Factor

> 0.95

Surge Protection

up to 3KV

Operating temperature

-20° C to 55° C

Applied Places:

Lobby, Shops, Restaurants, Hotels, Institutions, Hospitals etc.



LED 0.5 WATT BULB

(W/Y/B/R/G)

**Short Code**

IN001

Power

0.5W

Lamp holder

B22

Voltage

AC 90-320V 50HZ

Operating temperature

-20° C to 55° C

Voltage

AC 100-320V, 50-60HZ

Applied Places:

Bedroom, Living room, Lobby, Rooms,
Bathrooms, Shops, Restaurants, Hotels,
Institutions, Hospitals etc.



LED INVERTER BULB



Short Code	Power
SP001	7W
SP002	9W

Lamp holder
B22/E27

Luminous flux
≥ 80/W

CCT
CW/WW/NW

CRI
≥ 80Ra

Voltage
AC90-270V 50Hz

Power Factor
> 0.95

Operating temperature
-20° C to 55° C

Backup
4 hours

Applied Places:
Bedroom, Living room, Lobby, Rooms, Bathrooms,
Shops, Restaurants, Hotels, Institutions, Hospitals etc.



LED T5 TUBELIGHTS

(BATTEN)



Short Code	Power
IN014	5W
IN015	10W
IN016	18W
IN017	20W
IN018	22W

Luminous flux

≥105/W

CCT

CW/WW/NW

CRI

≥80Ra

Voltage

AC 90-320V, 50-60HZ

Power Factor

>0,95

Surge Protection

up to 3KV

Operating temperature

-20° C to 55° C

Applied Places:

Bedroom, Living room, Lobby, Rooms, Bathrooms, Shops, Restaurants, Hotels, Institutions, Hospitals etc.



LED T BULB

**Short Code**

SP006

Power

11W

Lamp holder

B22

Luminous flux

≥ 100/W

CCT

6500 (COOL DAY LIGHT)

CRI

≥ 80Ra

Energy Saving

33% over 15W CFL

Operating temperature

-20° C to 55° C

Applied Places:

Bedroom, Living room, Lobby, Rooms, Shops, Restaurants, Bathrooms, Hotels, Institutions, Hospitals etc.



UJJWALA DOWN CONCEALED LIGHT



Short Code	Model	Power
UJ005		3W
UJ006		6W
UJ007	HEXA	6W
UJ008		10W
UJ009	HEXA	10W

Luminous flux

≥ 70/W

Voltage

AC 90-320V 50HZ

CRI

≥ 80Ra

Operating temperature

-20° C to 55° C

Applied Places:

Bedroom, Living room, Lobby, Rooms, Bathrooms, Shops, Restaurants, Hotels, Institutions, Hospitals etc.



UJJWALA HALF DOME BULB 180°



Short Code	Power
UJ001	3W
UJ002	5W
UJ003	7W
UJ004	9W

Lamp holder
B22/E27

Luminous flux
≥ 100/W

CCT
CW/WW/NW

CRI
≥ 80Ra

Voltage
AC 90-320V, 50-60HZ

Beam angle
180°

Life span
18000 hrs

Power Factor
> 0.95

Surge Protection
up to 2.5KV

Operating temperature
-20° C to 55° C

Applied Places:
Bedroom, Living room, Lobby, Rooms,
Bathrooms, Shops, Restaurants, Hotels,
Institutions, Hospitals etc.



LED PANEL LIGHT Backlit (Round/Square)



Short Code	Type	Power
IN043	Round	4W
IN044	Square	4W
IN047	Round	8W
IN048	Square	8W
IN055	Round	15W
IN056	Square	15W
IN063	Round	22W
IN064	Square	22W

Luminous flux
≥ 90/W

CCT
CW/WW/NW

CRI
≥ 80Ra

Voltage
AC 100-320V 50-60Hz

Power Factor
> 0.90

Surge Protection
up to 2.5KV

Operating temperature
-20° C to 55° C

Applied Places:
Lobby, Rooms, Bathrooms, Shops, Restaurants,
Hotels, Institutions, Hospitals etc.



LED ROCKET BULB



Short Code	Power
IN011	24W
IN012	36W
IN013	45W

Lamp holder

B22/E27

Luminous flux

≥ 100/W

CCT

CW/WW/NW

CRI

≥ 80Ra

Voltage

AC 90-320V, 50-60Hz

Power Factor

> 90

Surge Protection

up to 3kV

Operating temperature

-20° C to 55° C

Applied Places:

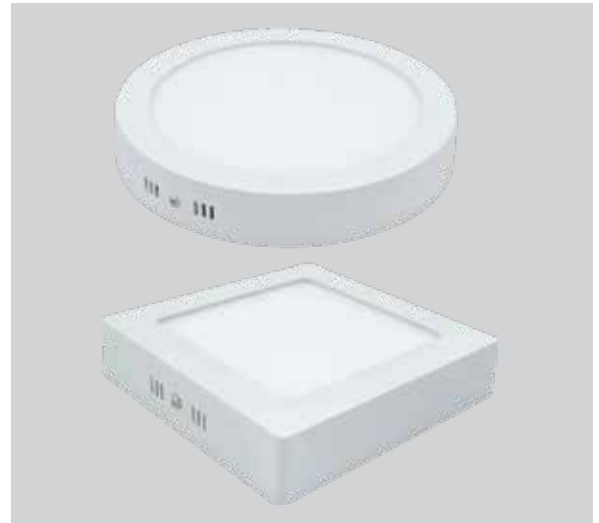
Shops, Restaurants, Hotels, Industries,
Retail outlets & Showrooms etc.

COMMERCIAL LIGHTING





LED SURFACE LIGHT (Round/Square)



Short Code	Type	Power
IN025	Round	6W
IN026	Square	6W
IN033	Round	12W
IN034	Square	12W
IN041	Round	18W
IN042	Square	18W

Luminous flux

≥ 90/W

CCT

CW/WW/NW

CRI

≥ 80Ra

Voltage

AC 100-320V, 50-60HZ

Power Factor

> 0.90

Surge Protection

up to 2.5KV

Operating temperature

-20° C to 55° C

Applied Places:

Lobby, Rooms, Bathrooms, Shops, Restaurants, Hotels, Institutions, Hospitals etc.



LED PANEL LIGHT

Edgelit(Round/Square)



Short Code	Type	Power
IN019	Round	3W
IN020	Square	3W
IN021	Round	5W
IN022	Square	5W
IN023	Round	6W
IN024	Square	6W
IN031	Round	12W
IN032	Square	12W
IN035	Round	15W
IN036	Square	15W
N039	Round	18W
IN040	Square	18W

Luminous flux
≥90/W

CCT
CW/WW/NW

CRI
≥80Ra

Voltage
AC 100-320V, 50-60HZ

Power Factor
>0,90

Surge Protection
up to 2.5KV

Type
Edgelit/ Backlit/ Concealed

Operating temperature
-20° C to 55° C

Applied Places:
Showroom, Living room, Lobby, Rooms, Shops, Restaurants, Hotels, Institutions, Hospitals etc.



LED COB DOWNLIGHTS



Short Code	Power
IN068	3W
IN070	6W
IN071	9W
IN075	18W
IN077	30W

Luminous flux

≥ 80/W

CCT

CW/WW/NW

CRI

≥ 80Ra

Voltage

AC 100-320V 50-60HZ

Power Factor

> 0,90

Surge Protection

up to 2,5KV

Operating temperature

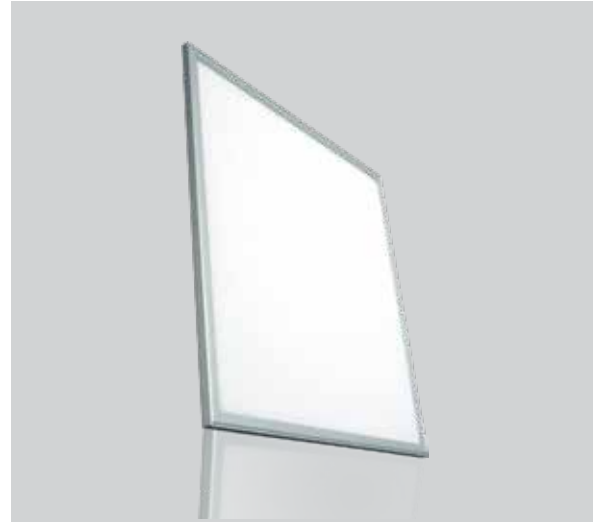
-20° C to 55° C

Applied Places:

Showroom, Living room, Lobby, Rooms, Shops, Restaurants, Hotels, Institutions, Hospitals etc.



LED PANEL LIGHT



Short Code	Size	Power
IN087	1x1	24W
IN088	2x2	36W
IN089	2x2	40W
IN090	4x1	40W

Luminous flux

≥90/W

CCT

CW/WW/NW

CRI

≥80Ra

Voltage

AC 100-320V, 50-60HZ

Power Factor

>0,90

Surge Protection

up to 2,5kV

Operating temperature

-20° C to 55° C

Applied Places:

Office, Meeting Room, School/Hospital,
Shop floor, Shopping Complex etc.



LED COB ZOOMLIGHTS



Short Code	Power
IN078	6W
IN079	12W
IN080	15W
IN081	30W

Luminous flux
≥80/W

CCT
CW/WW/NW

CRI
≥75Ra

Voltage
AC 100-320V 50-60HZ

Power Factor
>0.90

Surge Protection
up to 2.5KV

Operating temperature
-20° C to 55° C

Applied Places:
Showroom, Lobby, Shops, Restaurants,
Hotels, Institutions, Hospitals etc.



LED SPOT LIGHT



Short Code	Power
IN097	2W
IN098	4W
IN099	6W

Luminous flux
≥90/W

CCT
CW/WW/NW

CRI
≥75Ra

Voltage
AC 100-320V 50-60HZ

Power Factor
>0.90

Surge Protection
up to 2,5KV

Operating temperature
-20° C to 55° C

Applied Places:
Living room, Lobby, Rooms, Shops, Restaurants,
Hotels, Institutions, Hospitals etc.



LED TRACK LIGHT



Short Code	Power
IN083	10W
IN085	20W
IN086	30W

Luminous flux
 $\geq 80/W$

CCT
 CW/WW/NW

CRI
 $\geq 75Ra$

Voltage
 AC 100-320V 50-60HZ

Power Factor
 > 0.90

Surge Protection
 up to 2.5KV

Operating temperature
 $-20^{\circ}C$ to $55^{\circ}C$

Applied Places:
 Lobby, Shops, Restaurants, Hotels, Institutions,
 Hospitals etc.



LED STRIP & ROPE LIGHT



Short Code	Power
IN093	4.8W/M/STRIP
OU048	4.8W/M/STRIP
IN094	12.5W/M/STRIP
OU049	12.5W/M/STRIP
IN095	5.8W/M/ROPE
IN096	7.8W/M/ROPE
OU050	7.8W/M/ROPE

Luminous flux
 $\geq 80/W$

CCT
 CW/WW/NW

CRI
 $\geq 75Ra$

Voltage
 DC 12V

Ingress Protection
 IP: 20/44/67

Operating temperature
 $-20^{\circ} C$ to $55^{\circ} C$

Applied Places:
 Showrooms, Balcony, Shops, Restaurants,
 Hotels, Institutions, Hospitals etc.

OUTDOOR LIGHTING





LED SPIKE LIGHT



Short Code	Power
OU028	5W
OU029	7W
OU030	10W
OU031	12W
OU032	15W
OU033	18W
OU034	20W
OU035	24W

Luminous flux

≥ 105/W

CCT

CW/WW/NW

CRI

≥ 80Ra

Voltage

AC 100-320V, 50-60Hz

Power Factor

> 0,95

Surge Protection

up to 3KV

Operating temperature

-20° C to 55° C

Applied Places:

Parks, Gardens, Restaurants, Hotels, Institutions, Hospitals etc.



LED GARDEN LIGHT



Short Code	Power
OU023	10W
OU024	15W
OU025	30W

Luminous flux
≥105/W

CCT
CW/WW/NW

CRI
≥80Ra

Voltage
AC 100-320V, 50-60Hz

Power Factor
>0,95

Surge Protection
up to 3kV

Operating temperature
-20° C to 55° C

Applied Places:
Parks, Gardens, Restaurants, Hotels,
Institutions, Hospitals etc.



LED BURIAL LIGHT



Short Code	Shape	Power
OU042	Round	3W
OU043	Square	3W
OU044	Round	9W
OU045	Square	9W

CCT

CW/WW/NW

Ingress Protection

IP: 65/66/67

Operating temperature

-20° C to 55° C

Applied Places:

Garden, Lobby, Hotels ,Restaurants,
Walkways etc.



LED STREET LIGHT



Short Code	Power
OU001	15W
OU002/03	18/20W
OU004/05	25/30W
OU006/07	40/45W
OU008/09	50/60W
OU010	70W
OU011	100W
OU012	120W
OU014	150W

Luminous flux

≥100/W

CCT

CW/WW/NW

CRI

≥80Ra

Voltage

AC 90-320V 50-60HZ

Power Factor

>0,95

Surge Protection

up to 7kV

Ingress Protection

IP: 65/66/67

Operating temperature

-20° C to 55° C

Applied Places:

Road Lighting, Parks, Security lightings etc.



UNDER WATER LIGHT



Short Code	Shape	Power
OU036	Round	3W
OU037	Square	3W
OU038	Round	9W
OU039	Square	9W

CCT

CW/WW/NW

Ingress Protection

IP: 67

Operating temperature

-20° C to 55° C

Applied Places:

Fountain, Swimming Pool, Water Shows, Fish Pond, Aqua Hotels Pools, Sea Aquarium, Theme Park etc.



LED WELL GLASS LIGHT



Short Code	Power
OU059	30W
OU060	45W

Luminous flux
≥ 90/W

CCT
CW/WW/NW

CRI
≥ 80Ra

Voltage
AC 90-320V, 50-60Hz

Power Factor
> 0.95

Surge Protection
up to 5KV

Life Span
30000 hrs.

Operating temperature
-20° C to 55° C

Applied Places:
Industrial use & Godowns etc.



LED FLOOD LIGHT



Short Code	Power
OU015	10W
OU016	20W
OU017	30W
OU018	50W
OU019	70W
OU020	100W
OU021	150W
OU022	200W

Luminous flux
≥ 90/W

CCT
CW/WW/NW

CRI
≥ 80Ra

Voltage
AC 90-320V, 50-60Hz

Power Factor
> 0,95

Surge Protection
up to 6KV

Ingress Protection
IP: 65/66/67

Operating temperature
-20° C to 55° C

Applied Places:
Industrial workshops, Construction Sites,
Cell Tower Sites, Advertising Billboards,
Stadium/Sports Area etc.



LED HI-BAY LIGHT



Short Code	Power
ID001	30W
ID002	50W
ID003	100W
ID004	120W
ID005	180W
ID006	200W

Luminous flux
≥100/W

CCT
CW/WW/NW

CRI
≥80Ra

Voltage
AC 90-320V, 50-60Hz

Power Factor
>0,95

Ingress Protection
IP: 65

Operating temperature
-20° C to 55° C

Applied Places:
Factories, Shop Floor, Shopping Complex,
Warehouse etc.



WALL WASHER



Short Code

IN092

Size

4 Feet

IP Rating

IP: 65/67

Operating temperature

-20° C to 55° C

Applied Places:

Water Fall, Garden, Building Indoor or Outdoor, Boundary etc.



BOX TYPE FITTING



Short Code

SP007

Power

2x20W

IP Rating

IP: 65

Operating temperature

-20° C to 55° C

Applied Places:

Industrial, Factories, Warehouse etc.

SOLAR LIGHTING





LED SOLAR LIGHT



Short Code	Power
OU051	7W
OU052	9W
OU053	12W
OU054	15W
OU055	18W
OU056	24W
OU057	30W
OU058	60W

Luminous flux

≥ 100/W

CCT

CW/WW/NW

CRI

≥ 70Ra

Voltage

12V/24V

Life Span

40000 Hrs.

Battery

Lead Acid, Li-on Battery

Operating temperature

-20° C to 55° C

Applied Places:

Residences, Extension Lawns, Park/Garden, Residential Area.

SOLAR HIGH MAST LIGHTING SYSTEM

A Solar PV White- LED High Mast Light consist of white LED luminary of maximum 4*18 Watt (LED + Driver) as per configuration along with solar PV modules and battery of given capacity, necessary control electronics-inter connecting wires / cables, module mounting structures etc. to Operate the load for dusk to dawn.



TECHNICAL SPECIFICATION:

PV Module

Only indigenous modules shall be used in the Project. SPV module aggregate capacity 440 Wp (110 Wp X 4 Nos.) at under STC. Module Voc minimum of 21V.

Battery

Lithium Ferro Phosphate battery aggregate capacity 12.8 Volt, 200AH | (50AHx4 nos.) 12.8 Volt 50 Ah of one unit.

Light Source

White Emitting Diode (W-LED) 4x18 Watt (LED + Driver) Using LEDs which emits ultraviolet light will not be Permitted Light

Light Out put

White colour (colour temperature 5500-6500 K). Lumen efficacy of LED- min 135 lumens/Watt @350 mA. The illumination should be uniform without dark bands or abrupt variations, and soothing to the eye. Higher light output will be preferred.

Average Duty Cycle

Dusk to dawn

SOLAR HOME LIGHT KIT 1

A Solar Power pack Kit consist of Three white LED luminary (one 3 watt and two each 5 watt and 7 watt), one DC stand fan 15-20 Watt and a mobile charging plug point as per configuration along with solar PV modules and battery of given capacity, necessary control electronics-inter connecting wires / cables, module mounting structures etc.

TECHNICAL SPECIFICATION:

PV Module

Only indigenous modules shall be used in the project. SPV module 200 Wp at STC, Module Voc minimum of 21V.

Battery

Lithium Ferro phosphate (LiFePO₄ or LFP) 12.8 Volt, 80Ah.

Charge Controller

Suitable MPPT integrated DC charge controller with remote monitoring provisions.

Light Source

White Light Emitting Diode (W-LED) 7 Watt, 5 Watt and 3 watt, Using LEDs which emits ultraviolet light will not be permitted White colour (colour temperature should be in range of 5000°k to 6500°k).

Light Out put

White colour (colour temperature should be in range of 5000°k to 6500°k).The illumination should be uniform, without dark bands or abrupt variations and soothing to the eyes.

Fan

12 Volt operated DC stand fan of power consumption should be 15-20 watt,

Socket

12v, TV Socket

USB Port

USB port for mobile Charging in built in charge controller with multipin connector



SOLAR HOME LIGHT KIT 2

A Solar Power pack Kit consist of LED Batten (W-LED) (one 3 watt and two each 5 watt and 7 watt), one DC stand fan 15-20 Watt and a mobile charging plug point as per configuration along with solar PV modules and battery of given capacity, necessary control electronics-inter connecting wires / cables, module mounting structures etc.

TECHNICAL SPECIFICATION:

PV Module

Only indigenous modules shall be used in the project. SPV module 200 Wp at STC. Module Voc minimum of 21V.

Battery

Lithium Ferro phosphate (LiFePO₄ or LFP) 12.8 Volt, 80Ah,

Charge Controller

Suitable MPPT integrated DC charge controller with remote monitoring provisions.

Light Source

Fixture of LED Batten (W-LED) 7 Watt, 5 Watt and 3 watt, with inbuilt driver & control electronics.

Light Out put

White colour (colour temperature should be in range of 5000°k to 6500°k).The illumination should be uniform, without dark bands or abrupt variations and soothing to the eyes.

Fan

12 Volt operated DC stand fan of power consumption should be 15-20 watt,

Socket

12v, TV Socket

USB Port

USB port for mobile Charging in built in charge controller with multipin connector



LED SPECIALIZED LIGHTS





RETRO

**Short Code**

RT001

RT002

Power

20W/Batten

20W/Bulb

Luminous Flux

≥1800lm/ 2000lm

CCT

2700K-6500K

Voltage

AC 90-320, 50-60Hz

Operating temperature

-20° C to 55° C

Applied Places:

Lobby, Shops, Restaurants, Hotel, Hospitals etc.



FLAMEPROOF



Short Code	Power
SP008	30W
SP009	40W

Luminous Flux
≥ 3000lm /4000lm

CCT
3000K-6500K

Voltage
AC 100-300, 50-60Hz

Operating temperature
-20° C to 55° C

Applied Places:
Industrial, Process Industry, Milling, Oil/Gas refinery,
Tunnel etc.



LINEAR LIGHT



Short Code	Power
SP010	40W
SP011	48W

Voltage
AC 100-300, 50-60Hz

Operating temperature
-20° C to 55° C

Applied Places:
Restaurants, Office Receptions, Conferences Hall,
Malls etc.

State Of the Art LED Manufacturing Plant in the heart of Lucknow





Factory Address

CP 39, Jankipuram Lucknow 226 021
Uttar Pradesh, India

tel 0522 - 4242121

email info@namasteled.com

www.namasteled.com

